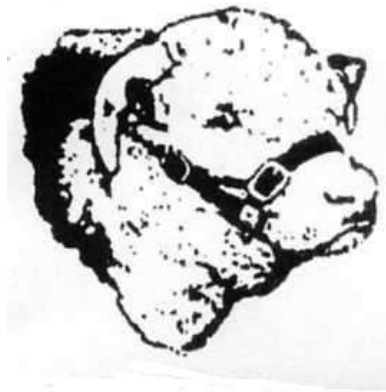


Kirraweena Glenholme

HEREFORDS & POLL HEREFORD STUDS



17th ANNUAL SALE

At
“Glenholme”
Rodeo Drive
COOTAMUNDRA NSW

Wednesday,
6th March, 2019

~~~~~

**18 HEREFORD**  
**& POLL HEREFORD BULLS**  
**21 UNJOINED HEIFERS**

# **KIRRAWEENA**

*Est. 1953*

# **GLENHOLME**

*Est. 1993*

## **HEREFORD STUDS**

### **SALE**

*at*

**“Glenholme”**

**Rodeo Drive**

**COOTAMUNDRA NSW**

**Wednesday, 6<sup>th</sup> March, 2019**

**18 HEREFORD & POLL HEREFORD  
BULLS**

**21 UNJOINED HEIFERS**

- *Inspections from 10.30 am on the day or by prior arrangement with the vendors*
- *Sale to commence at approximately 1.30 pm*
  - *Light Luncheon provided*
- *Free Delivery for all bulls sold to NSW & Victoria*

**Contact: Geoff & Heather Bush (02) 6942 3222**

[ghb.glenholme@bigpond.com](mailto:ghb.glenholme@bigpond.com)

[www.glenholmeherefords.com.au](http://www.glenholmeherefords.com.au)

*Selling Agents:*

**Holman Tolmie Pty Ltd**

**Cootamundra**

**(02) 6942 3055**

**Corey Nicholson**

**Mob 0417 423 055**

**James Tolmie**

**Mob 0439 911 082**

**Landmark, Wagga**

**Tim Woodham**

**0436 015 115**

**Landmark,**

**Cootamundra**

**Bill Mullins**

**(02)6942 122**

### **KIRRAWEENA HEREFORD STUD**

Kirraweena Hereford Stud was founded by the late Fred Bush in 1953, with a bull from the Glenelvie Stud and 2 females from the Bywong Stud, for the purpose of improving the commercial cattle he ran in conjunction with his father Sam and brother Rodney.

Two years after forming the Stud, Fred took his first cattle to the Sydney Royal Easter Show. He believed that the nearly 3 weeks (as it was then) mixing with the best Stud breeders in Australia would be the best place to learn.

Kirraweena cattle have been exhibited at every Sydney Royal Show since that first outing.

Commercial attributes were always top priority and with the use of seven Cuppa bulls in a row, rich in Vern (English) blood, they produced a line of easy doing cattle of a rich ruby red colour with females having plenty of milk. The easy doing ability and plenty of milk was necessary at "Greendale", Dalton. It was a fine wool property, situated 50 km east of Yass in Southern NSW. With the rich colour came softness and quality which the butchers still seek today, as before the technology now used, this was an indication of the eating quality of the meat.

Kirraweena has taken out numerous hoof and hook awards at both local and Royal Show level in mainly supermarket weight (300-420 live) classes.

The Kirraweena females are probably what the stud is best known for. A large number of both Hereford and Poll Hereford Studs have purchased heifers, the most well known of these, being the Llanglothan stud, who purchased heifers firstly as commercials and then later decided to form a Stud with them. They went on to breed bulls from those females to win major Show awards and received top prices at sales.

After the sudden passing of Fred in 1997, the partnership with Rodney was dissolved and the Kirraweena Cow herd was moved to Geoff & Heather Bush's property, "Glenholme" at Cootamundra.

Stud sires used over the years have come from Lowanna, Glenwarrah, Turee, Ohio, Avon View and the Oaklee Stud of Fred's great friend Clem Perrem.

In recent years, AI programs have been conducted with the Kirraweena females being joined to Cuppa Chrysler, Cootharaba Tarago, Invernaion Exeter, Freetown Vanguard, Freetown Kendall, Mawarra Virginian, Yarram Pompeii and Sugarloaf Houston.

### **GLENHOLME**

Glenholme was founded by Geoff & Heather in 1993. Formed with the purchase of 12 cows and 3 heifers from Don & Judy Maclean's Strathglee Stud at Moss Vale and later with females from Kirraweena, Tumulla (Max and Margaret Peel) and Lylen Studs. Females from the Field's Tiverton Stud and Smithston have been purchased.

Sires used over the years include Lamlash Leroy, Glen Wilga Python, Talbalba Limerick, 6 Smithston bulls including, Tam O'Shanter and Value Add, Charnock Each Way, Eurangatuck Bahrain and Devoncourt Rockford.

Bowmont Winchester was purchased in 2014 and his first sons and daughters sold very well in the 2017 sale.

Curracabark Junee was purchased in 2015. His first calves look promising and will be sold in 2018.

A new Sire, Lotus Larson was purchased in 2017.

A Poll Hereford herd was formed in 2003 to breed good commercial Poll Cattle. Bulls used have been Gunyah Lion, Braybook Braxton Y243, Valma Landmark and Valma Ollie, purchased at Wodonga in 2010.

Tycolah Majestic, sired by the Sydney Royal Interbreed Champion 2012 Tycolah Jovial, was purchased in 2015 and his first calves will be sold in 2018.

AI sires used in the Poll Herefords include Rilo Park Unshakeable, Kidman Think Big, Allendale Vengeance and Minlacowie Griffin.

Glenholme & Kirraweena Studs are currently joining 160 females annually.

## **SHOW SUCCESSES**

Sydney Royal Easter Show 2018 – Hereford feature Breed. High numbers this year meant most classes contained at least 20 exhibitors.

We had 10 head entered this year and finished up with 8 Ribbons.

Kirraweena Doreen M232 2<sup>nd</sup>

2<sup>nd</sup> Place in Pair of heifers

Kirraweena Makenzie Placed 3<sup>rd</sup>

2<sup>nd</sup> Place in the breeders Group of Three

Harden Show 2018 – Kirraweena Doreen M229 was the Senior and Grand Champion Female.



*2016 Champion Breeders Group Sydney Royal  
Kirraweena Glenholme Herefords*

## **DELIVERIES**

***Free delivery for bull purchases in NSW and Victoria.***

Cattle will be held free of charge at the Purchaser's risk until transport arrangements can be completed.

Instructions concerning the delivery of cattle purchased at this sale must be given in writing and signed by the buyer or their representative. Buyer's instruction slips are at the back of the catalogue. No verbal instructions will be accepted.

## **GST**

GST will be added to all prices gained on the day of the sale.

G R & H B Bush  
ABN 97 604 958 216

### **HERD HEALTH STATUS**

The property is in a Bovine Johnes disease protected zone and Tuberculosis free area. **All Cattle have been tested Negative for Pestivirus.** All Cattle have been vaccinated twice with Pestiguard.

### **WODONGA HEREFORD SHOW & SALE**

We have entered 7 bulls for the Wodonga National Show and Sale, 1 of which will be offered at our Sale. This Bull is Lot 4, Glenholme Norman. This bull will have a modest reserve.

### **BREEDPLAN**

Kirraweena Glenholme joined Group Breedplan in 2001. Breedplan figures on sale bulls are January 2018 Group EBV's. If you have any questions regarding Breedplan, do not hesitate to ask us.

### **SUPPLEMENTARY SHEET**

There will be a supplementary sheet available on the day of the sale detailing bull weights, eye muscle area, Fat Scans and Testicle measurements. Also any alterations to Sale Lots will be included.

### **OUTSIDE AGENTS**

4% Rebate to outside Agents introducing buyers in writing 24 hours prior to the sale and settling within 14 days.

### **GUARANTEE & AFTER SALE SERVICE**

Don't hesitate to contact us. We have always looked after our clients, however, we would strongly suggest that buyers look at insuring their purchases. Bulls have been prepared to show their potential whilst they are ready to use.



**Bowmont Winchester purchased in 2014.**

***GLENHOLME***

***PIES***

***Lunch is provided on the day  
of the sale -***

Come and try our delicious  
home-grown meat pies



**REFERENCE SIRES****Curracabark Junee (AI) (ET) (H) CRKJ106**

Born: 05/10/13

GH Neon 17N (IMP CAN) (H)  
 Mawarra Unique C041 (AI) (H)  
 Mawarra Minerva 554 ET1 (AI) (ET) (H)

SIRE:

Yarram Unique F181 (H)

Braybook Upperclass U504 (AI) (H)  
 Yarram Flossie A096 (H)  
 Yarram Flossie R065 (AI) (H)

Yarram Extra 57U M629 ET1 (AI) (ET) (H)  
 Curracabark Crusader (AI) (H)  
 Faulkand Carnation 42 (H)

DAM:

Curracabark Favourite F68 (H)

Yarram Star General S160 (AI) (H)  
 Curracabark Favourite 115 (AI) (H)  
 Curracabark Favourite 105 (H)

|       | BW   | Milk | 200 G | 400 G | 600 G | MWT  |
|-------|------|------|-------|-------|-------|------|
| EBV   | +8.1 | +13  | +38   | +60   | +84   | +76  |
| Acc % | 91   | 54   | 83    | 83    | 86    | 75   |
|       | CWT  | EMA  | RIB   | RUMP  | RBV%  | IMF% |
| EBV   | +49  | +5.0 | -0.5  | -0.9  | +1.9  | +0.3 |
| Acc%  | 72   | 62   | 68    | 73    | 63    | 69   |

**Notes: Top 5% EMA, Top 10% RBV%. Part of the 6<sup>th</sup> Cohort of the BIN Progeny Test Trial Sires.**

**Bowmont Winchester H063 (H) GRKH063**

Born: 7/3/12

South Boorok Cracov (H)  
 Sugarloaf Cracov A231 (H)  
 Sugarloaf T-Caroway X163 (H)

SIRE:

Gunyah Winchester (H)

Charnock Detonator (H)  
 Gunyah Loyal Y319 (H)  
 Gunyah Loyal R228 (H)

Widgiewa Jabiru (H)  
 Tarcombe Captain (H)  
 East Ross G Leonie J234 (H)

DAM:

Bowmont Queen W195 (H)

Devon Court Standard Lad (H)  
 Bowmont Queen 130 (H)  
 Bowmont Queen 78 (H)

|       | BW   | Milk | 200 G | 400 G | 600 G | MWT  |
|-------|------|------|-------|-------|-------|------|
| EBV   | +5.6 | +14  | +25   | +42   | +70   | +84  |
| Acc % | 87   | 57   | 78    | 79    | 80    | 71   |
|       | CWT  | EMA  | RIB   | RUMP  | RBV%  | IMF% |
| EBV   | +35  | +2.4 | -1.3  | -2.0  | +1.7  | -0.5 |
| Acc%  | 66   | 54   | 59    | 64    | 56    | 59   |

**Notes: Top 5% RBV**

---



**Talbalba Yogi (H)****R5XE074**

Born: 24/10/12

Monreid President (H)  
 Cootharaba Elgin 2 (H)  
 Cootharaba Pauline 147 ET5 (ET) (H)

SIRE:

Cootharaba Magnum (H)

Monreid President (H)  
 Cootharaba Pauline 279 (H)  
 Cootharaba Pauline 228 (H)

Monreid Jumbo (H)  
 Monreid National 2 (H)  
 Monreid Minerva 37 (H)

DAM:

Bundarra Minerva T38 (AI) (H)

Bundarra Juggler (H)  
 Bundarra Minerva 164 (H)

Bundarra Minerva 145 (H)

|       | BW   | Milk | 200 G | 400 G | 600 G | MWT  |
|-------|------|------|-------|-------|-------|------|
| EBV   | +5.9 | +7   | +28   | +35   | +51   | +30  |
| Acc % | 91   | 67   | 84    | 84    | 86    | 78   |
|       | CWT  | EMA  | RIB   | RUMP  | RBV%  | IMF% |
| EBV   | +24  | +5.1 | -0.8  | -1.4  | +2.6  | -0.2 |
| Acc%  | 75   | 66   | 71    | 75    | 69    | 74   |

**Notes: Top 10% EMA and Top 1% RBV****Sugarloaf Houston H146 (AI) (H)****SCHH146**

Born: 06/09/12

Cootharaba Elgin 2 (H)  
 Cootharaba Magnum (H)  
 Cootharaba Pauline 279 (H)

SIRE:

Glendan Park Empire E002 (AI) (ET) (H)

Bundarra D Top Gun (AI) (H)  
 Glendan Park Minerva W164 (A) (H)  
 Lyn Marr Minerva M90 (H)

South Boorook Cracov (H)  
 Sugarloaf Jelly Bean A220 (H)  
 Sugarloaf M-Jewel W121 (AI) (H)

DAM:

Sugarloaf Ladylike D18 (H)

S Boorook Pialba (H)  
 Sugarloaf Ladylike Y008 (H)

Sugarloaf Ladylike U028 (H)

|       | BW   | Milk | 200 G | 400 G | 600 G | MWT  |
|-------|------|------|-------|-------|-------|------|
| EBV   | +7.0 | +21  | +39   | +69   | +102  | +93  |
| Acc % | 88   | 57   | 82    | 84    | 85    | 75   |
|       | CWT  | EMA  | RIB   | RUMP  | RBV%  | IMF% |
| EBV   | +70  | +6.7 | +0.1  | +0.3  | +2.3  | +0.8 |
| Acc%  | 72   | 62   | 67    | 72    | 64    | 70   |

**Notes: Top 1% EMA, RBV, Top 5% CW, 600 Day, Top 10% 400 Day, MCW, Milk**

**POLL HEREFORD****Tycolah Majestic (AI) (P)****TPCJ138**

Born: 17/09/13

Karina Ben Lomond (AI) (P)  
 Karina Cherry Z8 (H)  
 Karina Marsala S18 (P)

SIRE:

Tycolah Jovial F77 (PP)  
 Allendale Kentworth 2 (P)  
 Tycolah Countess W48 (P)  
 Tycolah Countess N65 (S)

Karina Ben Lomond (P)  
 Karina Cherry Z8 (P)  
 Karina Marsala S18 (P)

DAM:

Tycolah Bess E101 (P)  
 Norolle 124 U126 (H#)  
 Tycolah Bess A28 (P)  
 Tycolah Bess W66 (P)

|       | BW   | Milk | 200 G | 400 G | 600 G | MWT  |
|-------|------|------|-------|-------|-------|------|
| EBV   | +6.6 | +13  | +32   | +51   | +68   | +78  |
| Acc % | 87   | 59   | 80    | 80    | 81    | 73   |
|       | CWT  | EMA  | RIB   | RUMP  | RBV%  | IMF% |
| EBV   | +32  | +1.8 | +1.0  | +1.4  | -0.7  | +0.9 |
| Acc%  | 69   | 60   | 63    | 68    | 62    | 65   |

**Mount Difficult Cadbury (P)****MTTC8**

Born: 19/2/07

WLB Revelation 67U 23B (P)  
 Koanui Rocket Q334 (P)  
 Koanui Blush 9 (H)

SIRE:

Koanui Rocket 0219 (IMP NZL) (P)  
 Koanui Tarzan P5 (IMP NZL) (ET) (P)  
 Koanui Angel R187 (P)  
 Koanui Angel N162 (P)

Injemira Lancaster K144 ET1 (ET) (H)  
 Yarrow Cork (H)  
 Yarrow Last Day 288 (H)

DAM:

Mount Difficult Monique V65 (P)  
 JCD NV Ascendant Y26 (IMP USA) (P)  
 Mount Difficult Monique (AI) (P)  
 Mount Difficult Eve (P)

|       | BW   | Milk | 200 G | 400 G | 600 G | MWT  |
|-------|------|------|-------|-------|-------|------|
| EBV   | +0.5 | +16  | +38   | +67   | +87   | +87  |
| Acc % | 97   | 92   | 96    | 96    | 96    | 94   |
|       | CWT  | EMA  | RIB   | RUMP  | RBV%  | IMF% |
| EBV   | +77  | +4.9 | +1.6  | +2.4  | +0.7  | +1.3 |
| Acc%  | 89   | 81   | 85    | 88    | 83    | 88   |

**Notes: Top 1% Calving Ease and Carcase Weight,  
 Top 5% Birth Weight, IMF, Rump and Rib Fats, Top  
 10% EMA**

---

**MINLACOWIE GRIFFIN (PP)****JHOG13**

Born: 03/03/2011

Kidman Col Joy T96 (AI) (TW) (P)  
 Allendale Robin Hood Y169 (P)  
 Allendale Fancy U5 (AI) (ET) (P)

SIRE:

Allendale Waterloo B50 (AI) (P)  
 Allendale National W168 (PP)  
 Allendale Fancy Z35 (AI) (P)  
 Allendale Fancy N40 (AI) (ET) (P)

Bowen Unique U161 (AI) (P)  
 Yalgoo Boulder Z250  
 Yalgoo Bette T185 (P)

DAM:

Minlacowie Sally D120 (AI) (P)  
 Brt Blueprint N1 (AI) (ET) (PP)  
 Minlacowie Sally X40 (AI) (ET) (P)  
 Doonbiddie Sally N28 (AI) (ET) (P)

|       | BW   | Milk | 200 G | 400 G | 600 G | MWT  |
|-------|------|------|-------|-------|-------|------|
| EBV   | +4.8 | +23  | +36   | +69   | +105  | +104 |
| Acc % | 93   | 82   | 92    | 91    | 92    | 85   |
|       | CWT  | EMA  | RIB   | RUMP  | RBV%  | IMF% |
| EBV   | +66  | +3.7 | -0.1  | -0.1  | +0.7  | +1.7 |
| Acc%  | 81   | 71   | 76    | 81    | 74    | 80   |

**Notes: Top 5% for milk, 600D and IMF, Top 10% CWT****From left to right - Lots 11, 12, 14 & 10**

## **UNJOINED HEIFERS**

Please note that heifers will be sold on a 3 hammer system. The person with the highest bid will have the option of taking from 1 to all heifers in pen. If they only take a part then the rest of the pen will be re-offered. The same will apply to the person with the highest bid the second time – either all remaining heifers or heifers of their choice. If they choose only part of what was on offer then the remainder of pen would be sold a third time and if there are some remaining they will be sold on the fourth and last fall of the hammer. A \$15 transfer fee will be added to purchases if needed to be transferred (for stud use). Transport can be arranged.

Heifers will be preg tested empty prior to the sale. Every precaution has been taken to ensure that the bulls are not with the heifers.



**FEMALES – Unjoined Heifers**

|              | NO.  | NAME               | D.O.B.  | SIRE               | SIRE OF DAM          |
|--------------|------|--------------------|---------|--------------------|----------------------|
| <b>LOT 1</b> | N112 | Glenholme Doreen   | 14/5/17 | Invernaion Exeter  | Bundarra Zambia      |
|              | N115 | Glenholme Doreen   | 6/6/17  | Bowmont Winchester | Kirraweena Australia |
|              | N120 | Glenholme Duchess  | 10/6/17 | Bowmont Winchester | Talbalba Yogi        |
|              | N123 | Glenholme Duchess  | 3/6/17  | Bowmont Winchester | Kirraweena Australia |
|              | N153 | Glenholme Doreen   | 17/8/17 | Talbalba Yogi      | Smithston Zig Zag    |
|              | N156 | Glenholme Innocent | 3/9/17  | Talbalba Yogi      | Eurangatuck Bahrain  |
| H#           | N164 | Glenholme Pearl    | 7/8/17  | Tycolah Majestic   | Cuppa Chrysler       |

Purchased by: \_\_\_\_\_

Price: \_\_\_\_\_

Purchased by: \_\_\_\_\_

Price: \_\_\_\_\_

Purchased by: \_\_\_\_\_

Price: \_\_\_\_\_

|              | <b>NO.</b> | <b>NAME</b>        |              | <b>D.O.B.</b> | <b>SIRE</b>       | <b>SIRE OF DAM</b>   |
|--------------|------------|--------------------|--------------|---------------|-------------------|----------------------|
| <b>LOT 2</b> |            |                    |              |               |                   |                      |
| <b>POLL</b>  | N108       | Glenholme Doreen   | <b>UNREG</b> | 1/6/17        | Tycolah Majestic  | Valma Landmark       |
| <b>POLL</b>  | N127       | Glenholme Garland  |              | 3/7/17        | Tycolah Majestic  | Valma Landmark       |
| <b>POLL</b>  | N132       | Glenholme Victoria |              | 13/7/17       | Tycolah Majestic  | Valma Landmark       |
| <b>POLL</b>  | N145       | Glenholme Venus    |              | 22/8/17       | Tycolah Majestic  | Valma Ollie          |
| <b>POLL</b>  | N163       | Glenholme Duchess  |              | 20/12/17      | Tycolah Majestic  | Valma Ollie          |
|              | N222       | Kirraweena Doreen  |              | 12/8/17       | Curracabark Junee | Kirraweena Australia |
|              | N232       | Kirraweena Doreen  |              | 28/9/17       | Curracabark Junee | Thorn Hill Zac       |

Purchased by: \_\_\_\_\_

Price: \_\_\_\_\_

Purchased by: \_\_\_\_\_

Price: \_\_\_\_\_

Purchased by: \_\_\_\_\_

Price: \_\_\_\_\_

| <b>LOT 3</b> | <b>No.</b> | <b>Name</b>        | <b>D.O.B.</b> | <b>SIRE</b>       | <b>SIRE OF DAM</b>   |
|--------------|------------|--------------------|---------------|-------------------|----------------------|
|              | N148       | Glenholme Victoria | 25/8/17       | Westwood Veron    | Bundarra Zambia      |
|              | N150       | Glenholme Victoria | 28/8/17       | Talbalba Yogi     | Bundarra Zambia      |
|              | N159       | Glenholme Pearl    | 4/11/17       | Curracabark Junee | Smithston Value Add  |
|              | N160       | Glenholme Doreen   | 5/11/17       | Curracabark Junee | Devon Court Rockford |
|              | N218       | Kirraweena Pearl   | 5/8/17        | Curracabark Junee | Thorn Hill Zac       |
|              | N231       | Kirraweena Doreen  | 26/9/17       | Curracabark Junee | Kirraweena Australia |
|              | N233       | Kirraweena Doreen  | 29/9/17       | Curracabark Junee | Cootharaba Tarago    |

Purchased by: \_\_\_\_\_ Price: \_\_\_\_\_

Purchased by: \_\_\_\_\_ Price: \_\_\_\_\_

Purchased by: \_\_\_\_\_ Price: \_\_\_\_\_

## STUD BULLS

### LOT 4

#### GLENHOLME NORMAN (AI) (H) GHBN101

Born: 12/01/2017

SIRE:

Curracabark Junee J106 (AI) (ET) (H)

Gunyah Winchester (H)  
Bowmont Winchester H063 (H)  
Bowmont Queen W195 (AI) (H)

DAM:

Glenholme Victoria L002 (H)

Smithston Zig Zag (AI) (H)  
Glenholme Victoria E009 (AI) (H)  
Lyle Victoria W027 (H)

|       | BW   | Milk | 200 G | 400 G | 600 G | MCW |
|-------|------|------|-------|-------|-------|-----|
| EBV   | +7.4 | +10  | +31   | +47   | +73   | +77 |
| Acc % | 65   | 37   | 61    | 59    | 62    | 45  |
|       | EMA  | RIB  | RUMP  | RBV%  | IMF%  | CWT |
| EBV   | +3.0 | -1.2 | -1.7  | +1.8  | -0.3  | +38 |
| Acc%  | 35   | 39   | 42    | 41    | 46    | 43  |

Notes: Top 10% of breed for Retail Beef Yield.  
Entered for Wodonga. Second place at Sydney  
Hereford feature show 2018. Heifer's first calf.

Purchased by:

Price:



**Lot 4 – Glenholme Norman**



**LOT 5**

**GLENHOLME NIGHTINGALE (H)      GHBN152**

Born: 16/08/2017

SIRE:

Talbalba Yogi (AI) (H)

Cootharaba Magnum (H)  
Mawarra Virginian (H)  
Mawarra Cherry Ripe 263 (H)

DAM:

Glenholme Doreen H005 (AI) (H)

Eurangatuck Bahrain (H)  
Glenholme Doreen E022 (H)  
Glenholme Doreen W045 (H)

|       | BW   | Milk | 200 G | 400 G | 600 G | MCW |
|-------|------|------|-------|-------|-------|-----|
| EBV   | +5.5 | +10  | +30   | +40   | +63   | +43 |
| Acc % | 72   | 48   | 65    | 65    | 66    | 58  |
|       | EMA  | RIB  | RUMP  | RBV%  | IMF%  | CWT |
| EBV   | +4.2 | -0.2 | -4.4  | +1.7  | +0.2  | +33 |
| Acc%  | 43   | 47   | 50    | 45    | 48    | 56  |

Notes: Top 10% of breed for Retail Beef Yield.

Purchased by: \_\_\_\_\_

Price: \_\_\_\_\_



**Lot 5 – Glenholme Nightingale**

**LOT 6**  
**GLENHOLME NEVILLE (H) GHBN110**  
Born 11/05/2017

SIRE:  
Curracabark Junee J106 (AI) (ET) (H)  
Bundarra Wally (H)  
Bundarra Zambia (H)  
Bundarra Lioness S78 (AI) (H)

DAM:  
Glenholme Twilight G075 (H)  
Smithston Tam O'Shanter ET2 (AI) (ET) (H)  
Lynen Twilight A071 (H)  
Eurangatuck Twilight 319 (H)

|       | BW   | Milk | 200 G | 400 G | 600 G | MCW |
|-------|------|------|-------|-------|-------|-----|
| EBV   | +7.5 | +11  | +37   | +60   | +83   | +85 |
| Acc % | 69   | 39   | 63    | 65    | 67    | 58  |
|       | EMA  | RIB  | RUMP  | RBV%  | IMF%  | CWT |
| EBV   | +4.1 | -0.8 | -1.0  | +1.6  | -0.0  | +49 |
| Acc%  | 45   | 50   | 53    | 47    | 47    | 55  |

Notes: Top 10% of breed for Retail Beef Yield.

Purchased by: \_\_\_\_\_ Price: \_\_\_\_\_



**Lot 6 – Glenholme Neville**

**LOT 7**  
**GLENHOLME NADAL (AI) (H) GHBN130**  
Born 04/07/2017

SIRE:  
Sugarloaf Houston H146 (AI) (H)  
Smithston Union Jack (H)  
Eurangatuck Bahrain (H)  
Eurangatuck Twilight (H)

DAM:  
Glenholme Doreen C021 (H)  
Smithston Sailor ET1 (ET) (H)  
Glenholme Doreen W020 (H)  
Glenholme Doreen 5 (H)

|       | BW   | Milk | 200 G | 400 G | 600 G | MCW |
|-------|------|------|-------|-------|-------|-----|
| EBV   | +6.0 | +19  | +34   | +58   | +86   | +85 |
| Acc % | 71   | 44   | 63    | 64    | 66    | 57  |
|       | EMA  | RIB  | RUMP  | RBV%  | IMF%  | CWT |
| EBV   | +4.2 | -0.7 | -0.9  | +1.9  | -0.1  | +55 |
| Acc%  | 43   | 47   | 52    | 45    | 46    | 53  |

Notes: Top 5% of the breed for Retail Beef Yield.

Purchased by: \_\_\_\_\_ Price: \_\_\_\_\_



**Lot 7 – Glenholme Nadal**

**LOT 8**  
**GLENHOLME NICHOLAS (AI) (H)**      **GHBN113**  
Born: 14/05/2017

SIRE:  
Invernaion Exeter (H)

Cootharabra Magnum (H)  
Talbalba Yogi (AI) (H)  
Bundarra Minerva T38 (AI) (H)

DAM:  
Glenholme Doreen K062 (H)  
Smithston Sailor ET1 (ET) (H)  
Glenholme Doreen W010 (H)  
Lyn Doreen 22 (H)

|       | BW   | Milk | 200 G | 400 G | 600 G | MCW |
|-------|------|------|-------|-------|-------|-----|
| EBV   | +3.1 | +6   | +16   | +18   | +30   | +16 |
| Acc % | 71   | 54   | 66    | 68    | 69    | 62  |
|       | EMA  | RIB  | RUMP  | RBV%  | IMF%  | CWT |
| EBV   | +2.0 | +1.2 | +2.1  | -0.1  | +0.5  | +5  |
| Acc%  | 49   | 53   | 57    | 51    | 49    | 59  |

Indexes: Top 10% of the breed for Rump. Heifer's first calf. Heifer bull potential

Purchased by:

Price:



**Lot 8 – Glenholme Nicholas**

**LOT 9**  
**GLENHOLME NEWTOWN (H) GHBN124**  
 Born 11/06/2017

SIRE:  
 Curracabark Junee (AI) (ET) (H)

Moorlands Rockford R174 (AI) (H)  
 Devon Court Rockford Y176 (H)  
 Devon Court Necklet U572 (H)

DAM:  
 Glenholme Treasure (H)

Smithston Sailor ET1 (ET) (H)  
 Glenholme Treasure Z039 (H)  
 Glenholme Treasure 5 (H)

|       | BW   | Milk | 200 G | 400 G | 600 G | MCW |
|-------|------|------|-------|-------|-------|-----|
| EBV   | +5.7 | +13  | +29   | +45   | +64   | +63 |
| Acc % | 71   | 38   | 63    | 63    | 66    | 57  |
|       | EMA  | RIB  | RUMP  | RBY%  | IMF%  | CWT |
| EBV   | +3.1 | -0.7 | -1.1  | +1.6  | -0.2  | +35 |
| Acc%  | 42   | 46   | 50    | 44    | 44    | 52  |

Notes: Top 10% of the breed for Retail Beef Yield.

Purchased by: \_\_\_\_\_ Price: \_\_\_\_\_



**Lot 9 - Glenholme Newtown**

**LOT 10**  
**GLENHOLME NAPOLEON (AI) (S)      GHBN106**  
Born 03/05/2017

SIRE:  
Mount Difficult Cadbury (AI) (P)

The Granary Bothwell X554 (P)  
Valma Ollie (P)  
Valma Golds Moonshine Z35 (P)

DAM:  
Kirraweena Minerva K027 (P)

Invernaion Exeter (H)  
Kirraweena Minerva G107 (AI) (H)  
Kirraweena Minerva W022 (H)

|       | BW   | Milk | 200 G | 400 G | 600 G | MCW |
|-------|------|------|-------|-------|-------|-----|
| EBV   | +2.4 | +12  | +32   | +54   | +72   | +72 |
| Acc % | 63   | 52   | 61    | 62    | 63    | 58  |
|       | EMA  | RIB  | RUMP  | RBV%  | IMF%  | CWT |
| EBV   | +3.8 | +0.5 | +0.5  | +1.1  | +0.6  | +54 |
| Acc%  | 48   | 50   | 53    | 50    | 51    | 55  |

Notes: top 15% for birth weight. Heifer's first calf.  
Heifer bull potential.

Purchased by:

Price:



**Lot 10 – Glenholme Napoleon**



**LOT 12**  
**GLENHOLME NEIL (P)**                      **GHBN134**  
Born 14/07/2017

SIRE:  
Tycolah Majestic J138 (AI) (P)

The Granary Bothwell X554 (P)  
Valma Ollie (P)  
Valma Golds Moonshine Z35 (P)

DAM:  
Glenholme Lindy Loo H062 (P)  
Valma Landmark A39 (P)  
Glenholme Lindy Loo (P)  
Smithston Lindy Loo B310 (H)

|       | BW   | Milk | 200 G | 400 G | 600 G | MCW |
|-------|------|------|-------|-------|-------|-----|
| EBV   | +6.0 | +13  | +32   | +56   | +74   | +80 |
| Acc % | 70   | 39   | 63    | 63    | 62    | 54  |
|       | EMA  | RIB  | RUMP  | RBV%  | IMF%  | CWT |
| EBV   | +2.6 | -0.3 | -0.8  | +0.8  | +0.3  | +42 |
| Acc%  | 44   | 49   | 53    | 46    | 46    | 51  |

Purchased by:

Price:



**Lot 12 – Glenholme Neil**



**LOT 13**  
**GLENHOLME NOAH (S)                      GHBN137**

Born 01/08/2017

SIRE:

Tycolah Majestic J138 (AI) (P)

Valma Herald W 15 (AI) (P)

Valma Landmark A39 (P)

Valma Advancer's Banksia S86 (P)

DAM:

Glenholme Duchess F019 (P)

Devon Court Rockford Y176 (H)

Glenholme Duchess C030 (H)

Glenholme Duchess X013 (TW) (H)

|       | BW   | Milk | 200 G | 400 G | 600 G | MCW |
|-------|------|------|-------|-------|-------|-----|
| EBV   | +5.6 | +17  | +32   | +53   | +71   | +77 |
| Acc % | 70   | 40   | 63    | 63    | 62    | 55  |
|       | EMA  | RIB  | RUMP  | RBV%  | IMF%  | CWT |
| EBV   | +2.6 | -0.1 | -0.4  | +0.7  | +0.4  | +40 |
| Acc%  | 43   | 48   | 52    | 46    | 45    | 51  |

Purchased by:

Price:

---



**Lot 13 – Glenholme Noah**



**LOT 15****KIRRAWEENA NIKE (AI) (H)****FSBN206**

Born: 27/05/2017

SIRE:

Sugarloaf Houston H146 (AI) (H)

Kirraweena Australia (H)  
 Glenhome Flanders (H)  
 Glenholme Queenie A071 (H)

DAM:

Kirraweena Doreen J228

Thorne Hill Zac (H)  
 Kirraweena Doreen C119 (H)  
 Kirraweena Doreen Z125 (H)

|       |      |      |       |       |       |     |
|-------|------|------|-------|-------|-------|-----|
|       | BW   | Milk | 200 G | 400 G | 600 G | MCW |
| EBV   | +6.2 | +14  | +34   | +59   | +90   | +86 |
| Acc % | 70   | 72   | 63    | 63    | 63    | 55  |
|       | EMA  | RIB  | RUMP  | RBV%  | IMF%  | CWT |
| EBV   | +5.0 | -0.8 | -0.9  | +2.3  | +0.2  | +55 |
| Acc%  | 44   | 49   | 54    | 47    | 48    | 52  |

Notes: Top 10% in breed for EMA, top 5% for Retail Beef Yield.

Purchased by:

Price:

**Lot 15 – Kirraweena Nike**

**LOT 16**  
**KIRRAWEENA NOVAK (H) FSBN250**

Born: 29/04/2017

SIRE:

Curracabark Junee J106 (AI) (ET) (H)

Cootharabra Magnum (H)  
Muwarra Virginian (H)  
Muwarra Cherry Ripe 263 (H)

DAM:

Kirraweena Miss Bradman K210 (AI) (H)  
Lowanna Jackpot Y44 (H)  
Kirraweena Miss Bradman D117 (H)  
Kirraweena Miss Bradman 63 (H)

|       | BW   | Milk | 200 G | 400 G | 600 G | MCW |
|-------|------|------|-------|-------|-------|-----|
| EBV   | +6.4 | +14  | +33   | +51   | +74   | +68 |
| Acc % | 70   | 40   | 63    | 65    | 68    | 59  |
|       | EMA  | RIB  | RUMP  | RBV%  | IMF%  | CWT |
| EBV   | +4.0 | -0.6 | -0.9  | +1.6  | +0.1  | +42 |
| Acc%  | 46   | 51   | 55    | 48    | 49    | 55  |

Notes: Top 10% of the breed for Retail Beef Yield.  
Heifer's first calf.

Purchased by: \_\_\_\_\_

Price: \_\_\_\_\_



**Lot 16 – Kirraweena Novak**

**LOT 17**

**KIRRAWEENA NORTON (AI) (H) FSBN207**

Born: 02/06/2017

SIRE:

Sugarloaf Houston H146 (AI) (H)

Kirraweena Walsh (H)

Lowanna Walsh (H)

Lowanna Daylight 30 (H)

DAM:

Kirraweena Queenie G144 (H)

Lowanna Jackpot Y44 (H)

Kirraweena Queenie F123 (H)

Kirraweena Queenie C132 (H)

|       | BW   | Milk | 200 G | 400 G | 600 G | MCW |
|-------|------|------|-------|-------|-------|-----|
| EBV   | +5.0 | +15  | +27   | +41   | +60   | +58 |
| Acc % | 68   | 36   | 61    | 62    | 61    | 52  |
|       | EMA  | RIB  | RUMP  | RBY%  | IMF%  | CWT |
| EBV   | +4.5 | -0.4 | -0.3  | +1.9  | +0.2  | +37 |
| Acc%  | 43   | 47   | 52    | 45    | 46    | 49  |

Notes: Top 10% of the breed for Retail Beef Yield

Purchased by:

Price:



**Lot 17 – Kirraweena Norton**

**LOT 18**  
**KIRRAWEENA NORRIS (H)**  
Born 08/11/2017

**FSBN234**

SIRE:  
Curracabark Junee J106 (AI) (ET) (H)

Kirraweena Walsh (H)  
Lowanna Walsh (H)  
Lowanna Daylight 30 (H)

DAM:  
Kirraweena Doreen H228 (H)

Lamlash Leroy (H)  
Kirraweena Doreen W053 (H)  
Kirraweena Doreen 256 (H)

|       | BW   | Milk | 200 G | 400 G | 600 G | MCW |
|-------|------|------|-------|-------|-------|-----|
| EBV   | +6.2 | +10  | +29   | +42   | +61   | +57 |
| Acc % | 61   | 36   | 58    | 57    | 59    | 51  |
|       | EMA  | RIB  | RUMP  | RBV%  | IMF%  | CWT |
| EBV   | +3.7 | -0.4 | -0.5  | +1.2  | +0.2  | +31 |
| Acc%  | 37   | 46   | 50    | 42    | 46    | 48  |

Purchased by: \_\_\_\_\_

Price: \_\_\_\_\_



**Lot 18 – Kirraweena Norris**

**LOT 19**  
**GLENHOLME NICE (H)                      GHBN154**  
Born 17/08/2017

SIRE:  
Bowmont Winchester H063 (H)

Glenwarrah Lynch U028 (H)  
Kirraweena Australia (H)  
Kirraweena Doreen W053 (H)

DAM:  
Glenholme Queenie F030 (H)  
Eurangatuck Bahrain (H)  
Glenholme Queenie B071 (H)  
Glenholme Queenie 9 (H)

|       | BW   | Milk | 200 G | 400 G | 600 G | MCW |
|-------|------|------|-------|-------|-------|-----|
| EBV   | +5.2 | +9   | +24   | +38   | +64   | +73 |
| Acc % | 70   | 36   | 59    | 56    | 57    | 50  |
|       | EMA  | RIB  | RUMP  | RBY%  | IMF%  | CWT |
| EBV   | +2.4 | -1.2 | -1.7  | +1.5  | -0.4  | +32 |
| Acc%  | 33   | 37   | 40    | 36    | 37    | 44  |

Purchased by: \_\_\_\_\_ Price: \_\_\_\_\_



**Lot 19 – Kirraweena Nice**

**LOT 20**  
**GLENHOLME NASH (H)                      GHBN129**

Born 03/07/2017

SIRE:

Bowmont Winchester

Cootharaba Magnum (H)  
Talbalba Yogi (AI) (H)  
Bundarra Minerva T38 (H)

DAM:

Glenholme Innocent K080 (H)

Eurangatuck Bahrain (H)  
Glenholme Innocent D019 (H)  
Glenholme Innocent W079 (H)

|       | BW   | Milk | 200 G | 400 G | 600 G | MCW |
|-------|------|------|-------|-------|-------|-----|
| EBV   | +4.3 | +10  | +22   | +32   | +52   | +52 |
| Acc % | 59   | 37   | 55    | 59    | 57    | 49  |
|       | EMA  | RIB  | RUMP  | RBV%  | IMF%  | CWT |
| EBV   | +3.1 | -0.7 | -1.0  | +1.4  | -0.2  | +27 |
| Acc%  | 37   | 42   | 46    | 39    | 41    | 47  |

Purchased by: \_\_\_\_\_

Price: \_\_\_\_\_



**Lot 20 – Glenholme Nash**



**LOT 21**  
**GLENHOLME NEWTON (H) GHBN170**  
Born 20/11/17

SIRE:  
Bowmont Winchester (H)

Kirraweena Walsh (H)  
Lowanna Walsh (H)  
Lowanna Daylight 30 (H)

DAM:  
Glenholme Queenie H015 (AI) (H)  
Eurangatuck Bahrain (H)  
Glenholme Queenie E026 (H)  
Glenholme Queenie A073 (H)

|       | BW   | Milk | 200 G | 400 G | 600 G | MCW |
|-------|------|------|-------|-------|-------|-----|
| EBV   | +5.6 | +13  | +27   | +46   | +72   | +82 |
| Acc % | 67   | 36   | 57    | 55    | 58    | 50  |
|       | EMA  | RIB  | RUMP  | RBY%  | IMF%  | CWT |
| EBV   | +2.4 | -1.6 | -2.3  | +1.8  | -0.5  | +38 |
| Acc%  | 33   | 39   | 42    | 36    | 38    | 45  |

Notes: Top 10% of the breed for Retail Beef Yield

Purchased by:

Price:

---



**Lot 21 – Glenholme Newton**



**Trillick Hotspur**  
*Future AI Sire. Semen imported from  
Ireland*

*Also available*

***GLENHOLME***  
**POLL DORSET**  
**RAMS**



*(Brucellosis accredited)*  
**Now taking orders for  
2019**

**Buyer's Instruction Slip** – no verbal instructions can be accepted

NAME: .....

ADDRESS: .....

.....Phone: .....

(of person to whom transfer certificate is to be issued)

**PIC NO.** ..... **LOTS PURCHASED:** .....

ACCOUNT TO: .....

DELIVERY INSTRUCTIONS: .....



***Kirraweena Murray.***

***Sold Wodonga 2018 for \$14,000 to McPherson Herefords.***

***CONSISTENTLY BREEDING QUALITY, EASY DOING, QUIET HEREFORDS SINCE 1953***