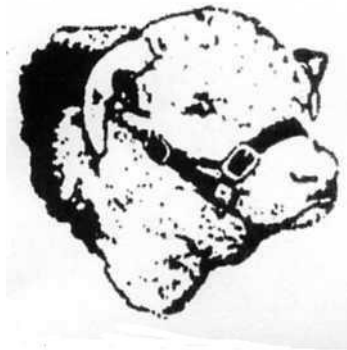


Kirraweena Glenholme

HEREFORDS & POLL HEREFORD STUDS



ANNUAL SALE

At
"Glenholme"
Rodeo Drive
COOTAMUNDRA NSW

**Thursday,
5th MARCH, 2015**

~~~~~

**19 HEREFORD  
& POLL HEREFORD BULLS  
36 UNJOINED HEIFERS**

# **KIRRAWEEENA**

*Est. 1953*

# **GLENHOLME**

*Est. 1993*

## **HEREFORD STUDS**

### **SALE**

*at*

**“Glenholme”**

**Rodeo Drive**

**COOTAMUNDRA NSW**

**Thursday, 5<sup>th</sup> MARCH, 2015**

**19 HEREFORD & POLL HEREFORD  
BULLS**

**36 UNJOINED HEIFERS**

- *Inspections from 10.30 am on the day or by prior arrangement with the vendors*
- *Sale to commence at approximately 1.30 pm*
  - *Light Luncheon provided*
- *Free Delivery for all bulls sold to NSW & Victoria*

**Contact: Geoff & Heather Bush (02) 6942 3222**

[ghb.glenholme@bigpond.com](mailto:ghb.glenholme@bigpond.com)

[www.glenholmeherefords.com.au](http://www.glenholmeherefords.com.au)

*Selling Agents:*

**Holman Tolmie Pty Ltd**

**(02) 6942 3055**

**Garry James**

**A/H (02) 6942 1633**

**Mob 0427 037 447**

**Steve Tolmie**

**A/H (02) 6942 4205**

**Landmark**

**Andrew Wishart**

**0407 424 706**

**Landmark, 9 Barnes St,**

**Cootamundra**

**Bill Mullins**

**(02)6942 122**

### **KIRRAWEENA HEREFORD STUD**

Kirraweena Hereford Stud was founded by the late Fred Bush in 1953, with a bull from the Glenelvie Stud and 2 females from the Bywong Stud, for the purpose of improving the commercial cattle he ran in conjunction with his father Sam and brother Rodney.

Two years after forming the Stud, Fred took his first cattle to the Sydney Royal Easter Show. He believed that the nearly 3 weeks (as it was then) mixing with the best Stud breeders in Australia would be the best place to learn.

Kirraweena cattle have been exhibited at every Sydney Royal Show since that first outing.

Commercial attributes were always top priority and with the use of seven Cuppa bulls in a row, rich in Vern (English) blood, they produced a line of easy doing cattle of a rich ruby red colour with females having plenty of milk. The easy doing ability and plenty of milk was necessary at "Greendale", Dalton. It was a fine wool property, situated 50 km east of Yass in Southern NSW. With the rich colour came softness and quality which the butchers still seek today, as before the technology now used, this was an indication of the eating quality of the meat.

Kirraweena has taken out numerous hoof and hook awards at both local and Royal Show level in mainly supermarket weight (300-420 live) classes.

The Kirraweena females are probably what the stud is best known for. A large number of both Hereford and Poll Hereford Studs have purchased heifers, the most well known of these, being the Llanglothan stud, who purchased heifers firstly as commercials and then later decided to form a Stud with them. They went on to breed bulls from those females to win major Show awards and received top prices at sales.

After the sudden passing of Fred in 1997, the partnership with Rodney was dissolved and the Kirraweena Cow herd was moved to Geoff & Heather Bush's property, "Glenholme" at Cootamundra.

Stud sires used over the years have come from Lowanna, Glenwarrah, Turee, Ohio, Avon View and the Oaklee Stud of Fred's great friend Clem Perrem.

In recent years, AI programs have been conducted with the Kirraweena females being joined to Cuppa Chrysler, Cootharaba Tarago, Invernaion Exeter, Freetown Vanguard, Freetown Kendall and Mawarra Virginian.

### **GLENHOLME**

Glenholme was founded by Geoff & Heather in 1993. Formed with the purchase of 12 cows and 3 heifers from Don & Judy Maclean's Strathglee Stud at Moss Vale and later with females from Kirraweena, Tumulla (Max and Margaret Peel) and Lysten Studs. Females from the Field's Tiverton Stud and Smithston have been purchased.

Sires used over the years include Lamlash Leroy, Glen wilga Python, Talbalba Limerick, 6 Smithston bulls including, Tam o'Shanter and Value Add, Charnock Each Way, Eurangatuck Bahrain, Devoncourt Rockford, Bundarra Zambia and Talbalba Yogi.

An extensive AI program has been conducted including Mawarra Virginian and Yarram Park Pompeii V055.

Bowmont Winchester and Talbalba Bridgetown were purchased in 2014.

A Poll Hereford herd was formed in 2003 to breed good commercial Poll Cattle. Bulls used have been Gunyah Lion, Braybook Braxton Y243, Valma Landmark and Valma Ollie, purchased at Wodonga in 2010. AI sires used in the Poll Herefords include Rilo Park Unshakeable, Allendale Vengeance, Kidman Think Big and Minlicowie Griffin.

Glenholme & Kirraweena Studs are currently joining 160 females annually.

### **SHOW SUCCESSES 2014**

Royal Canberra Show, February 2014 – Kirraweena Hadrian placed first in class, Glenholme Queenie J010 placed first in class, Glenholme Duchess H045 placed first in class, Glenholme Twilight G075 placed first in class.

Sydney Royal Easter Show March 2014 – Glenholme Duchess H034 was awarded Reserve Senior Champion Female.

Harden Show, September 2014 – Glenholme Jack Junior Champion Poll Hereford Bull, Glenholme Juan Reserve Senior Champion Hereford Bull, Glenholme Johnson Senior Champion Hereford Bull, Kirraweena Jimmy placed first in class, Glenholme Queenie J010 place Junior Champion Hereford Female. Glenholme Queenie B071 placed Reserve Senior Champion Female.

Cootamundra Show, October 2014 – Glenholme Johnson Reserve Senior Champion Bull, Kirraweena Jimmy placed first in class, Glenholme Queenie B071 was placed Reserve Senior Champion Female.



**Glenholme Duchess H034 Sydney Show 2014**

## **DELIVERIES**

***Free delivery for bull purchases in NSW and Victoria.***

Cattle will be held free of charge at the Purchaser's risk until transport arrangements can be completed. Instructions concerning the delivery of cattle purchased at this sale must be given in writing and signed by the buyer or their representative. Buyer's instruction slips are at the back of the catalogue. No verbal instructions will be accepted.

## **GST**

GST will be added to all prices gained on the day of the sale.

G R & H B Bush  
ABN 97 604 958 216

## **HERD HEALTH STATUS**

The property is in a Bovine Johnes disease protected zone and Tuberculosis free area.

**All cattle have been tested for "Free" for Pestivirus.**

## **WODONGA HEREFORD SHOW & SALE**

We have entered 5 bulls for the Wodonga National Show and Sale that will not be offered at our Sale.

## **BREEDPLAN**

Kirraweena Glenholme joined Group Breedplan in 2001. Breedplan figures on sale bulls are January 2015 Group EBV's. If you have any questions regarding Breedplan, do not hesitate to ask us.

## **SUPPLEMENTARY SHEET**

There will be a supplementary sheet available on the day of the sale detailing bull weights, eye muscle area, Fat Scans and Testicle measurements. Also any alterations to Sale Lots will be included.

**OUTSIDE AGENTS**

4% Rebate to outside Agents introducing buyers in writing 24 hours prior to the sale and settling within 14 days.

**GUARANTEE & AFTER SALE SERVICE**

Don't hesitate to contact us. We have always looked after our clients, however, we would strongly suggest that buyers look at insuring their purchases. Bulls have been prepared to show their potential however they are ready to use.



**Glenholme Flanders**

**REFERENCE SIRES****Glenholme Flanders (H)****F041**

Born 18/9/10

SIRE:

Kirraweena Australia

Monreid Quirk  
Smithston Tam O'Shanter  
Glanmonnow Olive 21

DAM:

Glenholme Queenie A073

Talbalba Limerick  
Glenholme Queenie 9  
Kirraweena Queenie 368

|       | BW   | Milk | 200 G | 400 G | 600 G | MWT  |
|-------|------|------|-------|-------|-------|------|
| EBV   | +6.8 | +8   | +30   | +50   | +79   | +82  |
| Acc % | 83   | 45   | 75    | 73    | 78    | 68   |
|       | CWT  | EMA  | RIB   | RUMP  | RBV%  | IMF% |
| EBV   | +40  | +3.0 | -1.7  | -2.3  | +1.9  | -0.1 |
| Acc%  | 63   | 51   | 57    | 62    | 55    | 56   |

Notes: Top 10% Mature Cow Weight, Top 5% Retail Beef Yield

**Kirraweena Australia (H)****A144**

Born 27/5/05

St Gabriels Pacemaker  
Devon Court Pacemaker 5 AI  
Devon Court Mellow 490

SIRE:

Glenwarrah Lynch

Iolanthe Bega  
Glenwarrah last Day 4  
Glenwarrah Last Day

Parkgrove Impressionist ET4  
Lamlash Leroy  
Avon View PR Royal 2

DAM:

Kirraweena Doreen W053

Avon View Zula  
Kirraweena Doreen 256  
Kirraweena Doreen 215 AI

|       | BW   | Milk | 200 G | 400 G | 600 G | MWT  |
|-------|------|------|-------|-------|-------|------|
| EBV   | +4.9 | +10  | +23   | +37   | +62   | +60  |
| Acc % | 87   | 59   | 80    | 80    | 83    | 74   |
|       | CWT  | EMA  | RIB   | RUMP  | RBV%  | IMF% |
| EBV   | +32  | +3.7 | -0.6  | -0.8  | +1.7  | +0.1 |
| Acc%  | 70   | 59   | 65    | 70    | 62    | 66   |

Notes: Top 5% Retail Beef Yield



**Talbalba Yogi (H)****E074**

Born 27/08/09

Monreid President (H)

Cootharaba Elgin 2 (H)

Cootharaba Pauline 147 ET5 (H)

SIRE:

Cootharaba Magnum (H)

Monreid President (H)

Cootharaba Pauline 279 (H)

Cootharaba Pauline 228 (H)

Monreid Jumbo (H)

Monreid National 2 (H)

Monreid Minerva 37 (H)

DAM:

Bundarra Minerva T38 (AI) (H)

Bundarra Juggler (H)

Bundarra Minerva 164 (H)

Bundarra Minerva 164 (H)

|       | BW   | Milk | 200 G | 400 G | 600 G | MWT  |
|-------|------|------|-------|-------|-------|------|
| EBV   | +4.4 | +10  | +22   | +30   | +45   | +31  |
| Acc % | 79   | 52   | 73    | 74    | 78    | 68   |
|       | CWT  | EMA  | RIB   | RUMP  | RBV%  | IMF% |
| EBV   | +25  | +4.9 | -0.6  | -0.9  | +2.5  | +0.0 |
| Acc%  | 64   | 51   | 58    | 62    | 56    | 56   |

Notes: Top 5% EMA and Top 1% Retail Beef Yield

**Mawarra Virginian (H)****D159**

Born 14/07/08

Monreid President (H)

Cootharaba Elgin 2 (H)

Cootharaba Pauline 147 ET5 (H)

SIRE:

Cootharaba Magnum (H)

Monreid President (H)

Cootharaba Pauline 279 (H)

Cootharaba Pauline 228 (H)

Vena Park Sharka (H)

Yallaroo Tornado T008 (AI) (H)

Yallaroo Amaze L048 (H)

DAM:

Mawarra Cherry Ripe 263 (H)

RVH Silver 50B 26 E (IMP USA) (H)

Mawarra Cherry Ripe 206 (AI) (TW) (H)

Mawarra Cherry Ripe 152 (H)

|       | BW   | Milk | 200 G | 400 G | 600 G | MWT  |
|-------|------|------|-------|-------|-------|------|
| EBV   | +7.5 | +15  | +37   | +63   | +97   | +84  |
| Acc % | 79   | 52   | 73    | 74    | 78    | 68   |
|       | CWT  | EMA  | RIB   | RUMP  | RBV%  | IMF% |
| EBV   | +53  | +4.5 | -0.2  | -0.4  | +1.8  | +1.0 |
| Acc%  | 64   | 51   | 58    | 62    | 56    | 56   |

Notes: Top 10% 200 Day, Top 5% 400 day and 600 day,  
 Top 10% Mature Cow Weight, Top 10% Scrotal Size,  
 Top 10% EMA, Top 5% Retail Beef Yield, Top 5% IMF

**Bundarra Zambia (H) Z068**

Born: 16/7/04

Charvel Network (H)  
Mount Emu Sage (H)  
Coora Silky M188 (H)

SIRE:

Bundarra Wally (H)

Monreid National  
Bundarra Monica R94 (H)  
Bundarra Monica N25 (H)

Lyonbank Jack Knife AI (H)  
Couralie Pompeii (H)  
Courallie Jeanna L238 ET5 ET (H)

DAM:

Bundarra Lioness S78 AI (H)

Bundarra Neptune AI (H)  
Bundarra Lioness P20 (H)  
Bundarra Lioness 46 (H)

|       | BW   | Milk | 200 G | 400 G | 600 G | MWT  |
|-------|------|------|-------|-------|-------|------|
| EBV   | +6.4 | +7   | +33   | +52   | +74   | +73  |
| Acc % | 87   | 65   | 85    | 85    | 88    | 77   |
|       | CWT  | EMA  | RIB   | RUMP  | RBV%  | IMF% |
| EBV   | +48  | +5.7 | +1.2  | +2.2  | +1.4  | +0.3 |
| Acc%  | 75   | 65   | 68    | 73    | 66    | 67   |

Notes: Top 5% EMA, Rib and Rump Fat



**Bundarra Zambia**

**POLL HEREFORD****Valma Ollie (P)****(see Lot 6)**

Born: 29/6/08

**VAL D28**

Mileura The Boss (P)  
The Granary Bothwell (P)  
The Granary Costas Natalie (P)

SIRE:

The Granary Bothwell X544 (P)  
Camden View Profit Maker (P)  
The Granary Showgirl U381 (P)  
Camden View Showgirl (P)

LLanglothan Eveready T623 (H)  
Valma Goldrush V103 (P)  
Valma Legacy's Banksia L88 (P)

DAM:

Valma Golds Moonshine Z35 (P)  
Doonbiddie Hustler (P)  
Valma Hustlers Moonshine V59 (P)  
Valmas Wesleys Moonshine

**Kidman Think Big (P)****KID E31**

Born: 4/8/09

Allendale National W168 (P)  
Kidman Forward Z69 (P)  
Kidman Constance V210 (P)

SIRE:

Kidman Essential (P)  
Bowen Vincent V1 (P)  
Kidman Royal Faith Y154 (P)  
Kidman Royal Faith S23 (P)

Bridge Powerplay (S)  
Dalkeith Trader (P)  
Dalkeith Janet 12 (P)

DAM:

Kidman Lorna X64 (P)  
Kidman Junior (P)  
Kidman Lorna S143 (P)  
Dulcidene Lorna L15 (P)

|       | BW   | Milk | 200 G | 400 G | 600 G | MWT  |
|-------|------|------|-------|-------|-------|------|
| EBV   | +4.6 | +12  | +32   | +50   | +70   | +69  |
| Acc % | 89   | 47   | 89    | 89    | 90    | 77   |
|       | CWT  | EMA  | RIB   | RUMP  | RBV%  | IMF% |
| EBV   | +47  | +2.5 | +0.8  | +1.4  | +0.2  | -0.4 |
| Acc%  | 75   | 64   | 68    | 74    | 65    | 73   |

Notes: Top 10% Rump Fat

**Future Sires:****Bowmont Winchester H063 (H)****GRK H063**

Born: 7/3/12

South Boorok Cracov (H)  
 Sugarloaf Cracov A231 (H)  
 Sugarloaf T-Caroway X163 (H)

SIRE:

Gunyah Winchester (H)

Charnock Detonator (H)  
 Gunyah Loyal Y319 (H)  
 Gunyah Loyal R228 (H)

Widgiewa Jabiru (H)  
 Tarcombe Captain (H)  
 East Ross G Leonie J234 (H)

DAM:

Bowmont Queen W195 (H)

Devon Court Standard Lad (H)  
 Bowmont Queen 130 (H)  
 Bowmont Queen 78 (H)

|       | BW   | Milk | 200 G | 400 G | 600 G | MWT  |
|-------|------|------|-------|-------|-------|------|
| EBV   | +5.7 | +13  | +28   | +47   | +77   | +85  |
| Acc % | 71   | 46   | 66    | 67    | 70    | 61   |
|       | CWT  | EMA  | RIB   | RUMP  | RBV%  | IMF% |
| EBV   | +41  | +3.0 | -1.0  | -1.6  | +1.9  | -0.1 |
| Acc%  | 56   | 47   | 50    | 55    | 48    | 47   |

Notes: Top 10% Mature Cow Weight, Top 5% Retail Beef Yield

---

**Talbalba Bridgetown****R5X H228**

Born: 24/10/12

Llanglothan Storm U964 (H)  
 Glendan Park Storm W134 (H)  
 Zum Park Athena (H)

SIRE:

Bowmont Storm C115 (H)

Bowmont King U943 (H)  
 Bowmont L Minerva Y314 (H)  
 Bowmont L Minerva W143 (H)

Cootharaba Elgin 2 (H)  
 Cootharaba Magnum (H)  
 Cootharaba Pauline 279(H)

DAM:

Talbalba Pearl D095 (H)

Moorlands Rockford Q194 (H)  
 Injemira Pearl U561 (H)  
 Injemira Pearl P226 (H)

|       | BW   | Milk | 200 G | 400 G | 600 G | MWT  |
|-------|------|------|-------|-------|-------|------|
| EBV   | +5.7 | +11  | +30   | +52   | +82   | +80  |
| Acc % | 79   | 44   | 71    | 72    | 72    | 61   |
|       | CWT  | EMA  | RIB   | RUMP  | RBV%  | IMF% |
| EBV   | +45  | +3.0 | -1.1  | -1.9  | +2.1  | -0.3 |
| Acc%  | 57   | 42   | 46    | 50    | 44    | 44   |

Notes: Top 5% Retail Beef Yield.

---

## **UNJOINED HEIFERS**

Please note that heifers will be sold on a 3 hammer system. The person with the highest bid will have the option of taking from 1 to all heifers in pen. If they only take a part then the rest of the pen will be re-offered. The same will apply to the person with the highest bid the second time – either all remaining heifers or heifers of their choice. If they choose only part of what was on offer then the remainder of pen would be sold a third time and if there are some remaining they will be sold on the fourth and last fall of the hammer. A \$15 transfer fee will be added to purchases if needed to be transferred (for stud use). Transport can be arranged.

Heifer's will be preg tested empty prior to the sale. Every precaution is taken to ensure that the bulls are not with the heifers.

## ***GLENHOLME***

### ***PIES***

***Lunch is provided on the day  
of the sale –***

Come and try our delicious  
home-grown meat pies



## **FEMALES – Unjoined Heifers**

|              | NO.  | NAME                    | D.O.B.   | SIRE               | SIRE OF DAM      |
|--------------|------|-------------------------|----------|--------------------|------------------|
| <b>LOT 1</b> | J213 | Kirraweena Pearl        | 13/7/13  | Bundarra Zambia    | Thorn Hill Zac   |
|              | J215 | Kirraweena Pearl        | 16/7/13  | Bundarra Zambia    | Lowanna Jackpot  |
|              | J218 | Kirraweena Pearl        | 18/7/13  | Glenholme Flanders | Glenwarrah Lynch |
|              | J220 | Kirraweena Minerva      | 25/7/13  | Glenholme Flanders | Lowanna Jackpot  |
|              | J226 | Kirraweena Queenie      | 20/8/13  | Talbalba Yogi      | Glenwarrah Lynch |
|              | J229 | Kirraweena Queenie      | 16/8/13  | Glenholme Flanders | Thorn Hill Zac   |
|              | J232 | Kirraweena Miss Bradman | 25/8/13  | Glenholme Flanders | Glenwarrah Lynch |
|              | J233 | Kirraweena Doreen       | 25/8/13  | Glenholme Flanders | Lowanna Jackpot  |
|              | J239 | Kirraweena Pearl        | 30/10/13 | Glenholme Flanders | Glenwarrah Lynch |
|              | J240 | Kirraweena Doreen       | 25/4/13  | Mawarra Virginian  | Lowanna Jackpot  |

Purchased by: \_\_\_\_\_

Price: \_\_\_\_\_

Purchased by: \_\_\_\_\_

Price: \_\_\_\_\_

Purchased by: \_\_\_\_\_

Price: \_\_\_\_\_

|              | NO.        | NAME                     | D.O.B.   | SIRE             | SIRE OF DAM              |
|--------------|------------|--------------------------|----------|------------------|--------------------------|
| <b>LOT 2</b> | J015       | Glenholme Venus (P)      | 22/3/13  | Valma Ollie      | Valma Landmark           |
|              | J028       | Glenholme Duchess (P)    | 26/4/13  | Kidman Think Big | Valma Landmark           |
|              | J044       | Glenholme C Winifred (P) | 18/7/13  | Valma Ollie      | Kirraweena Australia (H) |
|              | Unreg J046 | Glenholme Matchless (P)  | 22/7/13  | Valma Ollie      | Gunyah Lion              |
|              | J047       | Glenholme Duchess (P)    | 23/7/13  | Valma Ollie      | Devon Court Rockford (H) |
|              | J053       | Glenholme Victoria (P)   | 31/7/13  | Valma Ollie      | Gunyah Lion              |
|              | J072       | Glenholme Innocent (P)   | 28/8/13  | Valma Ollie      | Bundarra Zambia (H)      |
|              | J079       | Glenholme Victoria (P)   | 15/9/13  | Valma Ollie      | Gunyah Lion              |
|              | J080       | Glenholme Minerva (P)    | 18/9/13  | Valma Ollie      | Allendale Vengeance      |
| Unreg        | J081       | Glenholme Venus (P)      | 20/9/13  | Valma Ollie      | Valma Landmark           |
|              | J082       | Glenholme Minerva (P)    | 20/9/13  | Valma Ollie      | Gunyah Lion              |
|              | J087       | Glenholme Innocent (P)   | 15/10/13 | Valma Ollie      | Eurangatuck Bahrain (H)  |

Purchased by: \_\_\_\_\_

Price: \_\_\_\_\_

Purchased by: \_\_\_\_\_

Price: \_\_\_\_\_

Purchased by: \_\_\_\_\_

Price: \_\_\_\_\_

| No.   | Name | D.O.B.              | SIRE    | SIRE OF DAM          |                         |
|-------|------|---------------------|---------|----------------------|-------------------------|
| LOT 3 | J019 | Glenholme Winifred  | 23/4/13 | Bundarra Zambia      | Gordon Brook Curly      |
|       | J034 | Glenholme Lively    | 14/6/13 | Bundarra Zambia      | Smithston Tam O'Shanter |
|       | J036 | Glenholme Treasure  | 7/7/13  | GH Rawhide           | Glenwarrah Lynch        |
|       | J037 | Glenholme Treasure  | 8/7/13  | GH Rawhide           | Eurangatuck Bahrain     |
|       | J045 | Glenholme Victoria  | 21/7/13 | Talbalba Yogi        | Smithston Value Add     |
|       | J048 | Glenholme Minerva   | 28/7/13 | Talbalba Yogi        | Smithston Tam O'Shanter |
|       | J059 | Glenholme Doreen    | 9/8/13  | Talbalba Yogi        | Eurangatuck Bahrain     |
|       | J060 | Glenholme Victoria  | 13/8/13 | Talbalba Yogi        | Smithston Sailor        |
|       | J068 | Glenholme Duchess   | 27/8/13 | Talbalba Yogi        | Devon Court Rockford    |
|       | J076 | Glenholme Sunflower | 9/9/13  | Talbalba Yogi        | Smithston Sailor        |
|       | J077 | Glenholme Victoria  | 15/5/13 | Kirraweena Australia | Kirraweena Australia    |
|       | J085 | Glenholme Pearl     | 4/10/13 | Talbalba Yogi        | Charnock Each Way       |
|       | J086 | Glenholme Prudence  | 5/10/13 | Talbalba Yogi        | Smithston Vickery       |
|       | J091 | Glenholme Minerva   | 6/12/13 | Talbalba Yogi        | Smithston Tam O'Shanter |

Purchased by: \_\_\_\_\_ Price: \_\_\_\_\_

Purchased by: \_\_\_\_\_ Price: \_\_\_\_\_

Purchased by: \_\_\_\_\_ Price: \_\_\_\_\_



## **STUD BULLS**

### **LOT 4**

**GLENHOLME JUST RIGHT (H) J002**

**Unregistered**

Born: 20/01/13

SIRE:

Kirraweena Australia (H)

Smithston Tam O'Shanter ET2 (H)

Smithston Value Add ET1 (H)

Smithston Thoughtful P069 (H)

DAM:

Glenholme Unreg Cow (H)

Notes: Dam lost identity at weaning. Too good a calf to mark.

At scanning on 9/12/14, raw figures:

Weight: 906kg EMA: 118cm<sup>2</sup> Scrotal Size: 43cm

Purchased by:

Price:

---



**Lot 4 – Glenholme Just Right**

**LOT 5**  
**GLENHOLME JAGGER (H) J029**

Born: 12/05/2013

SIRE:

Bundarra Zambia (H)

Devon Court Pacemaker 5 (AI) (H)

Glenwarrah Lynch U028 (H)

Glenwarrah Last Day 4 (H)

DAM:

Glenholme Doreen B005 (H)

Smithston Sailor ET1 (H)

Glenholme Doreen X027 (H)

Glenholme Doreen 14 (H)

|       | BW   | Milk | 200 G | 400 G | 600 G | MCW |
|-------|------|------|-------|-------|-------|-----|
| EBV   | +5.2 | +7   | +28   | +43   | +64   | +61 |
| Acc % | 71   | 49   | 66    | 65    | 67    | 59  |
|       | EMA  | RIB  | RUMP  | RBV%  | IMF%  | CWT |
| EBV   | +4.2 | 0.0  | +0.2  | +1.6  | +0.2  | +38 |
| Acc%  | 46   | 49   | 52    | 47    | 47    | 55  |

Notes: Top 10% Retail Beef Yield and EMA

Purchased by:

Price:



**Lot 5 – Glenholme Jagger**

**LOT 6**  
**POLL HEREFORD**

**Valma Ollie (P)**

**VAL D28**

Born: 29/6/08

Mileura The Boss (P)  
The Granary Bothwell (P)  
The Granary Costas Natalie (P)

SIRE:

The Granary Bothwell X544 (P)  
Camden View Profit Maker (P)  
The Granary Showgirl U381 (P)  
Camden View Showgirl (P)

LLanglothan Eveready T623 (H)  
Valma Goldrush V103 (P)  
Valma Legacy's Banksia L88 (P)

DAM:

Valma Golds Moonshine Z35 (P)  
Doonbiddie Hustler (P)  
Valma Hustlers Moonshine V59 (P)  
Valmas Wesleys Moonshine

|       | BW   | Milk | 200 G | 400 G | 600 G | MCW  |
|-------|------|------|-------|-------|-------|------|
| EBV   | +5.6 | +9   | +32   | +51   | +70   | +76  |
| Acc % | 89   | 49   | 81    | 80    | 83    | 72   |
|       | CWT  | EMA  | RIB   | RUMP  | RBV%  | IMF% |
| EBV   | +42  | +2.9 | -1.3  | -2.7  | +2.1  | -0.4 |
| Acc%  | 68   | 56   | 62    | 67    | 59    | 63   |

Notes: Stud Sire, very sound. Bred very well for us.  
Was taken out of the cows mid-January. Top 10% of  
Breed for Scrotal Size. Top 5% for Retail Beef Yield.

Purchased by:

Price:



**Lot 6 – Valma Ollie**

**LOT 7****GLENHOLME JAGUAR (AI) (P)****J027**

Born 27/04/13

**SIRE:**

Kidman Think Big (AI) (TW) (P)

Valma Herald W15 (AI) (P)

Valma Landmark A39 (P)

Valma Advancer's Banksia (P)

**DAM:**

Glenholme Garland F028 (P)

Smithston Tam O'Shanter ET2 (H)

Glenholme Garland A055 (H)

Glenholme Garland V033 (H)

|       | BW   | Milk | 200 G | 400 G | 600 G | MCW |
|-------|------|------|-------|-------|-------|-----|
| EBV   | +5.2 | +10  | +32   | +54   | +77   | +74 |
| Acc % | 69   | 35   | 65    | 65    | 69    | 59  |
|       | EMA  | RIB  | RUMP  | RBV%  | IMF%  | CWT |
| EBV   | +2.5 | +0.1 | +0.3  | +0.7  | -0.2  | +48 |
| Acc%  | 46   | 50   | 55    | 48    | 49    | 55  |

Notes: New Sire. First calves by Kidman Think Big offered at this year's sale. Bulls by this sire are well worth looking at.

Purchased by:

Price:

**Lot 7 – Glenholme Jaguar**

**LOT 8**  
**GLENHOLME JULIUS (AI) (P) J041**  
Born: 13/07/13

SIRE:  
Kidman Think Big E31 (AI) (TW) (P)

Valma Herald W15 (AI) (P)  
Valma Landmark A39 (P)  
Valma Advancer's Banksia S86 (P)

DAM:  
Glenholme Doreen D033 (P)  
Glenwarrah Lynch (H)  
Glenholme Doreen B005 (H)  
Glenholme Doreen X027 (H)

|       | BW   | Milk | 200 G | 400 G | 600 G | MCW |
|-------|------|------|-------|-------|-------|-----|
| EBV   | +5.7 | +9   | +35   | +59   | +86   | +83 |
| Acc % | 71   | 36   | 67    | 66    | 70    | 60  |
|       | EMA  | RIB  | RUMP  | RBY%  | IMF%  | CWT |
| EBV   | +3.2 | -0.6 | -0.9  | +1.6  | -0.1  | +53 |
| Acc%  | 46   | 50   | 54    | 48    | 48    | 56  |

Notes: Top 10% for 400 day, 600 day and Mature Cow Weights

Purchased by:

Price:

---



**Lot 8 – Glenholme Julius**



**LOT 9**  
**GLENHOLME JAMAL (AI) (P) J025**

Born 27/04/13

SIRE:

Kidman Think Big E31 (AI) (TW) (P)

Valma Herald W15 (AI) (P)

Valma Landmark A39 (P)

Valma Advancer's Banksia S86 (P)

DAM:

Glenholme Victoria E028 (P)

Gunyah Lion V008 (P)

Glenholme Victoria Z010 (P)

Glenholme Victoria W006 (H)

|       | BW   | Milk | 200 G | 400 G | 600 G | MCW |
|-------|------|------|-------|-------|-------|-----|
| EBV   | +4.5 | +8   | +31   | +50   | +71   | +67 |
| Acc % | 69   | 36   | 65    | 64    | 68    | 58  |
|       | EMA  | RIB  | RUMP  | RBY%  | IMF%  | CWT |
| EBV   | +2.9 | +0.5 | +0.6  | +0.6  | +0.2  | +46 |
| Acc%  | 45   | 48   | 52    | 46    | 46    | 54  |

Purchased by:

Price:



**Lot 9- Glenholme Jamal**

**LOT 10**  
**GLENHOLME JUDD (S)                      J050**  
Born 30/7/13

SIRE:  
Valma Ollie

Smithston Union Jack (H)  
Eurangatuck Bahrain (H)  
Eurangatuck Twilight 319 (H)

DAM:  
Glenholme Pearl D025 (H)  
Smithston Value Add ET1 (H)  
Glenholme Pearl Z057 (H)  
Kirraweena Pearl (H)

|       | BW   | Milk | 200 G | 400 G | 600 G | MCW |
|-------|------|------|-------|-------|-------|-----|
| EBV   | +4.5 | +14  | +25   | +43   | +59   | +66 |
| Acc % | 72   | 36   | 65    | 64    | 69    | 58  |
|       | EMA  | RIB  | RUMP  | RBY%  | IMF%  | CWT |
| EBV   | +2.1 | -0.3 | -0.7  | +0.8  | -0.1  | +33 |
| Acc%  | 43   | 47   | 51    | 45    | 44    | 54  |

Purchased by:

Price:



**Lot 10 – Glenholme Judd**

**LOT 11**  
**GLENHOLME JESSE (P)**      **J078**  
Born 10/09/13

SIRE:  
Valma Ollie (P)

Valma Herald W15 (AI) (P)  
Valma Landmark A39 (P)  
Valma Advancer's Banksia S86 (P)

DAM:  
Kirraweena Doreen F057 (P)

Gunyah Lion V008 (P)  
Glenholme Doreen A107 (P)  
Kirraweena Doreen X014 (H)

|       | BW   | Milk | 200 G | 400 G | 600 G | MCW |
|-------|------|------|-------|-------|-------|-----|
| EBV   | +4.5 | +9   | +29   | +47   | +66   |     |
| Acc % | 57   | 33   | 51    | 51    | 54    |     |
|       | EMA  | RIB  | RUMP  | RBY%  | IMF%  | CWT |
| EBV   | +3.0 | -0.3 | -0.8  | +1.3  | +0.2  |     |
| Acc%  | 35   | 40   | 44    | 38    | 40    |     |

Purchased by:

Price:



**Lot 11 – Kirraweena Jesse**



**LOT 12****KIRRAWEENA JOE J214 (AI) (H)      J214**

Born 12/07/13

SIRE:

Bundarra Zambia (H)

Devoncourt Pacemaker 5 (AI) (H)  
Glenwarrah Lynch U028 (H)  
Glenwarrah Last Day 4 (H)

DAM:

Kirraweena Miss Bradman B128 (H)

Kirraweena International (AI) (H)  
Kirraweena Miss Bradman 61 (H)  
Kirraweena Miss Bradman 45 (H)

|       | BW   | Milk | 200 G | 400 G | 600 G | MCW |
|-------|------|------|-------|-------|-------|-----|
| EBV   | +3.8 | +8   | +25   | +37   | +51   | +49 |
| Acc % | 72   | 50   | 67    | 66    | 70    | 61  |
|       | EMA  | RIB  | RUMP  | RBY%  | IMF%  | CWT |
| EBV   | +3.8 | +0.8 | +1.5  | +0.6  | +0.5  | +33 |
| Acc%  | 49   | 51   | 56    | 50    | +0.5  | 57  |

Notes: Top 10% Rump Fat

Purchased by:

Price:

**Lot 12 – Kirraweena Joe J214**

**LOT 13**  
**KIRRAWEENA JED J201 (H) J201**  
Born 3/03/13

SIRE:  
Talbalba Yogi (AI) (H)

Cootharaba Naples (H)  
Cootharaba Tarago (H)  
Cootharaba Fancy 131 (H)

DAM:  
Kirraweena Doreen E107 (AI) (H)  
Glenwarrah Lynch U028 (H)  
Kirraweena Doreen A122 (H)  
Kirraweena Doreen 274 (AI) (H)

|       | BW   | Milk | 200 G | 400 G | 600 G | MCW |
|-------|------|------|-------|-------|-------|-----|
| EBV   | +4.0 | +11  | +22   | +31   | +46   | +40 |
| Acc % | 66   | 42   | 61    | 62    | 67    | 58  |
|       | EMA  | RIB  | RUMP  | RBY%  | IMF%  | CWT |
| EBV   | +3.6 | -0.4 | -0.5  | +1.8  | -0.2  | +25 |
| Acc%  | 44   | 47   | 51    | 46    | 44    | 54  |

Notes: Top 5% for Retail Beef Yield

Purchased by: \_\_\_\_\_ Price: \_\_\_\_\_



**Lot 13 – Kirraweena Jed J201**

**LOT 14****KIRRAWEENA JEROME J222 (H)****J222**

Born: 25/07/13

SIRE:

Glenholme Flanders (H)

Thorn Hill Vergil (H)

Thorn Hill Zac (H)

Thorn Hill Duchess 27 (H)

DAM:

Kirraweena Miss Bradman C121 (H)

Kirraweena International (AI) (H)

Kirraweena Miss Bradman 61 (H)

Kirraweena Miss Bradman 45 (H)

|       | BW   | Milk | 200 G | 400 G | 600 G | MCW |
|-------|------|------|-------|-------|-------|-----|
| EBV   | +5.1 | +6   | +24   | +39   | +61   | +63 |
| Acc % | 70   | 35   | 63    | 62    | 68    | 57  |
|       | EMA  | RIB  | RUMP  | RBY%  | IMF%  | CWT |
| EBV   | +3.3 | -0.7 | -0.8  | +1.6  | +0.1  | +30 |
| Acc%  | 41   | 45   | 50    | 43    | 40    | 52  |

Notes: Top 10% Retail Beef Yield

Purchased by:

Price:

**Lot 14 – Kirraweena Jerome J222**

**LOT 15****KIRRAWEENA JORDAN J230 (H)      J230**

Born: 21/08/13

SIRE:

Glenholme Flanders (H)

Devon Court Pacemaker 5 (AI) (H)  
Glenwarrah Lynch U028 (H)  
Glenwarrah Last Day 4 (H)

DAM:

Kirraweena Doreen A118 (H)

Glenholme Robert (H)  
Kirraweena Doreen W069 (H)  
Kirraweena Doreen 235 (TW) (H)

|       | BW   | Milk | 200 G | 400 G | 600 G | MCW |
|-------|------|------|-------|-------|-------|-----|
| EBV   | +3.7 | +9   | +22   | +33   | +50   | +47 |
| Acc % | 71   | 39   | 65    | 64    | 69    | 59  |
|       | EMA  | RIB  | RUMP  | RBV%  | IMF%  | CWT |
| EBV   | +2.4 | +0.1 | +0.4  | +0.6  | +0.4  | +26 |
| Acc%  | 44   | 48   | 53    | 46    | 44    | 55  |

Purchased by:

Price:

**Lot 15 – Kirraweena Jordan J230**

**LOT 16****Kirraweena Johannes (H) J219**

Born: 22/07/13

SIRE:

Glenholme Flanders (H)

Devon Court Pacemaker 5 (AI) (H)

Glenwarrah Lynch U028 (H)

Glenwarrah Last Day 4 (H)

DAM:

Kirraweena Doreen Y130 (TW) (H)

Invernaion Exeter (H)

Kirraweena Doreen 274 (AI) (H)

Kirraweena Doreen 217 (H)

|       | BW   | Milk | 200 G | 400 G | 600 G | MCW |
|-------|------|------|-------|-------|-------|-----|
| EBV   | +5.4 | +10  | +26   | +40   | +60   | +61 |
| Acc % | 72   | 40   | 65    | 63    | 68    | 58  |
|       | EMA  | RIB  | RUMP  | RBV%  | IMF%  | CWT |
| EBV   | +2.5 | -1.1 | -1.5  | +1.3  | 0.0   | +30 |
| Acc%  | 43   | 47   | 51    | 45    | 43    | 53  |

Purchased by:

Price:

*Also available****GLENHOLME*****POLL DORSET****RAMS*****(Brucellosis accredited)******Now taking orders for  
2015***

**LOT 17**  
**GLENHOLME JULIAN (H)      J092**  
Born: 2/07/13

SIRE:  
Kirraweena Australia (H)

Smithston Union Jack (H)  
Eurangatuck Bahrain (H)  
Eurangatuck Twilight 319 (H)

DAM:  
Glenholme Doreen E027 (H)

Smithston Sailor ET1 (H)  
Glenholme Doreen X027 (H)  
Glenholme Doreen 14 (H)

|       | BW   | Milk | 200 G | 400 G | 600 G | MCW |
|-------|------|------|-------|-------|-------|-----|
| EBV   | +4.5 | +11  | +25   | +43   | +65   | +65 |
| Acc % | 69   | 38   | 61    | 61    | 61    | 53  |
|       | EMA  | RIB  | RUMP  | RBY%  | IMF%  | CWT |
| EBV   | +2.9 | -1.0 | -1.3  | +1.6  | -0.2  |     |
| Acc%  | 40   | 44   | 48    | 42    | 41    |     |

Notes: Top 10% Retail Beef Yield

Purchased by:

Price:



**Lot 17 – Glenholme Julian**



**LOT 18****GLENHOLME JARROD (H)****J039**

Born: 11/07/13

Dunoon Page ET1 (H)  
GH Buck ET 26H (IMP CAN) (H)  
GH Super Girl ET 15Z (H)

SIRE:

GH Rawhide 78K (IMP CAN) (H)  
Home Builder Delux (H)  
JV Pearl 809 (IMP CAN) (H)  
JV Pearl 441 (H)

Llanglothan Storm U942 (H)  
Merlanie Dark & Stormy (H)  
Merlanie Snowflake U220 (H)

DAM:

Smithston Lindy Loo B310 (H)  
Dooliebeal Jackpot K002 (AI) (H)  
Smithston Lindy Loo U127 (AI) (H)  
Smithston Lindy Loo M008 (AI) (H)

|       | BW   | Milk | 200 G | 400 G | 600 G | MCW |
|-------|------|------|-------|-------|-------|-----|
| EBV   | +5.4 | +13  | +34   | +53   | +74   | +78 |
| Acc % | 69   | 55   | 67    | 66    | 70    | 60  |
|       | EMA  | RIB  | RUMP  | RBY%  | IMF%  | CWT |
| EBV   | +3.4 | -0.6 | -0.9  | +1.7  | -0.4  | +47 |
| Acc%  | 48   | 50   | 54    | 48    | 46    | 5   |

Notes: Top 5% Retail Beef Yield

Purchased by:

Price:

**Lot 18 – Glenholme Jarrod**

**LOT 19****GLENHOLME JOHANNESBURG (H) J073**

Born: 29/08/13

SIRE:

Talbalba Yogi (AI) (H)

Monreid Quirk (H)

Smithston Tam O'Shanter ET2 (AI) (H)

Glanmonnow Olive 21 (AI) (H)

DAM:

Glenholme Garland A055 (H)

Smithston Sailor ET1 (H)

Glenholme Garland V033 (H)

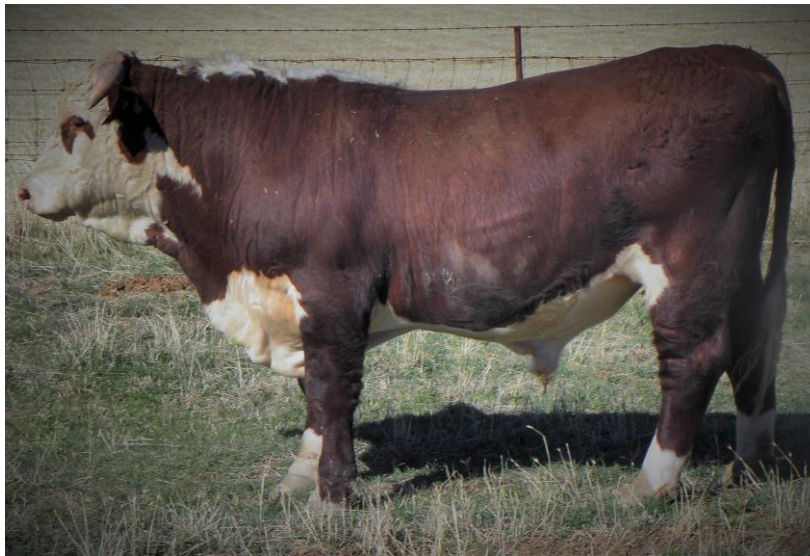
Glenholme Garland 2 (H)

|       | BW   | Milk | 200 G | 400 G | 600 G | MCW |
|-------|------|------|-------|-------|-------|-----|
| EBV   | +4.7 | +8   | +21   | +31   | +48   | +46 |
| Acc % | 71   | 45   | 65    | 65    | 69    | 60  |
|       | EMA  | RIB  | RUMP  | RBV%  | IMF%  | CWT |
| EBV   | +2.6 | -1.0 | -1.3  | +1.6  | -0.3  | +23 |
| Acc%  | 47   | 50   | 54    | 49    | 47    | 56  |

Notes: Top 10% Retail Beef Yield

Purchased by:

Price:

**Lot 19 – Glenholme Johannesburg**



**LOT 20****GLENHOLME JOSH (H)****J070**

Born 27/08/13

SIRE:

Talbalba Yogi (AI) (H)

Paraweena Pharoah ET3 (AI) (H)

Smithston Sailor ET1 (H)

Gunyah Last Day M110 (H)

DAM:

Glenholme Doreen W010 (H)

Lamlash Leroy (H)

Lyn Doreen 22 (H)

Lyn Doreen 2 (H)

|       | BW   | Milk | 200 G | 400 G | 600 G | MCW |
|-------|------|------|-------|-------|-------|-----|
| EBV   | +4.4 | +11  | +23   | +30   | +48   | +39 |
| Acc % | 71   | 46   | 65    | 64    | 69    | 59  |
|       | EMA  | RIB  | RUMP  | RBY%  | IMF%  | CWT |
| EBV   | +2.8 | -0.1 | +0.1  | +1.3  | -0.1  | +23 |
| Acc%  | 45   | 49   | 53    | 47    | 45    | 54  |

Purchased by:

Price:

**Lot 20 – Glenholme Josh**

**LOT 21**  
**GLENHOLME JAFFER (H)      J062**  
Born 13/08/13

SIRE:

Talbalba Yogi

Paraweena Pharoah ET3 (AI) (H)

Smithston Sailor ET1 (ET) (H)

Gunyah Last Day M110 (H)

DAM:

Glenholme Treasure Z039 (H)

Glen Wilga Python (H)

Glenholme Treasure 5 (H)

Glenholme Treasure 2 (H)

|       | BW   | Milk | 200 G | 400 G | 600 G | MCW |
|-------|------|------|-------|-------|-------|-----|
| EBV   | +3.8 | +10  | +20   | +26   | +39   | +33 |
| Acc % | 71   | 46   | 65    | 64    | 69    | 59  |
|       | EMA  | RIB  | RUMP  | RBY%  | IMF%  | CWT |
| EBV   | +2.9 | -0.3 | -0.2  | +1.5  | +0.0  | +19 |
| Acc%  | 45   | 48   | 52    | 46    | 45    | 55  |

Notes: Top 10% Retail Beef Yield

Purchased by: \_\_\_\_\_

Price: \_\_\_\_\_



**Lot 21 – Glenholme Jaffer**

**LOT 22**  
**GLENHOLME JEBEDIAH (H) J065**  
Born 19/08/13

SIRE:

Talbalba Yogi (AI) (H)

Smithston Shogun (AI) (H)

Smithston Urana U120 (H)

Smithston Laurie (AI) (H)

DAM:

Glenholme Duchess X013 (TW) (H)

Kirraweena Extra Edition (AI) (H)

Glenholme Duchess 2 (H)

Strathglee Duchess 6 (H)

|       | BW   | Milk | 200 G | 400 G | 600 G | MCW |
|-------|------|------|-------|-------|-------|-----|
| EBV   | +2.9 | +8   | +14   | +18   | +25   | +29 |
| Acc % | 71   | 46   | 65    | 64    | 69    | 60  |
|       | EMA  | RIB  | RUMP  | RBY%  | IMF%  | CWT |
| EBV   | +3.8 | -0.1 | -0.2  | +1.6  | +0.2  | +13 |
| Acc%  | 44   | 48   | 53    | 46    | 45    | 54  |

Notes: Top 10% Retail Beef Yield

Purchased by:

Price:



**Lot 22 – Glenholme Jebediah**

**Buyer's Instruction Slip** – no verbal instructions can be accepted

NAME: .....

ADDRESS: .....

.....Phone: .....  
(of person to whom transfer certificate is to be issued)

**PIC NO.** ..... **LOTS PURCHASED:** .....

ACCOUNT TO: .....

DELIVERY INSTRUCTIONS: .....





*2015 Sale Heifers*  
*Kirraweena Glenholme Herefords*  
*CONSISTENTLY BREEDING QUALITY, EASY DOING, QUIET HEREFORDS SINCE 1953*

